

MADE IN ITALY

We are made in Italy.

The company strategy is based on the values of the Italian culture, which is recalled on the production process and marketing choices: Italian production,

product customization, passion for research and creativity are the main guidelines to develop the perfect product for each customer.



ITALIAN PRODUCTION



MADE FOR YOU



CREATIVITY AND INNOVATION



PARTNERSHIP



DESIGN

THE COMPANY

Since 1947 AGB - Alban Giacomo Spa has been producing a complete range of hardware components, which are used all over the world to build windows and doors. The complete catalogue includes over 20,000 articles, completely manufactured in Italy in three high-tech plants, covering a total area of over 50,000 square metres.



Headquarters
Romano d'Ezzelino
(VI) Italy



Cylinders plant
Pove del Grappa
(VI) Italy



Warehouse
Cassola
(VI) Italy



Warehouse
Cassola
(VI) Italy

Sicurezza	4
Centro Focus	6
Scivola T	8
Multipoint locks	10
500 Series	12
600	13

Sicurezza

CERTIFIED
ISO 9001

Lock for internal and entrance door






The excellent lock for internal and entrance doors for people who require full anti-burglar security. Sicurezza locks are suitable for doors made of wood, PVC and aluminium.

Reversible spring latch,
rounded on both sides
to prevent door rattling.

Bolt in sintered steel

Lock with double
turn of the key



-  85 mm
-  18/22 mm
-  16/22 mm
-  20/25/30/35/40/45/50/60/70 mm
-  8 mm

steel, brass, stainless steel

Bolt only, without spring latch version
also available.

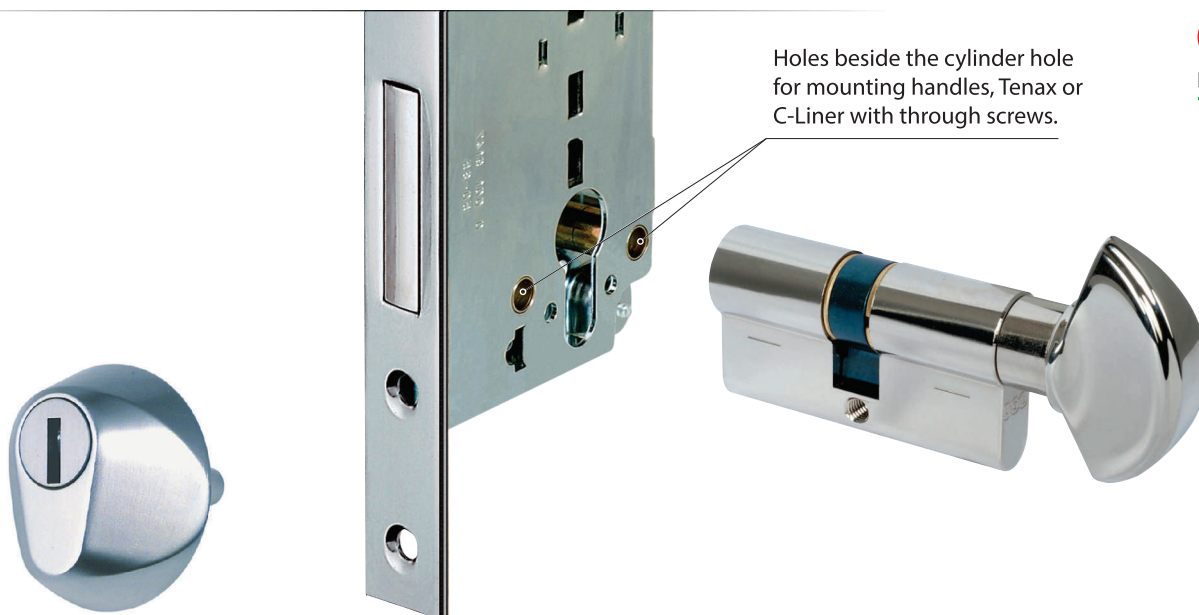
Ordering Code:

Sicurezza 45mm lock= SCZ45

50mm lock= SCZ50

60mm lock= SCZ60

70mm lock= SCZ70



T

- One-piece stainless steel body.
- Difficult grab with burglar tools thanks to the sloping shape.
- 3 versions: circle, circle with internal escutcheon, oval for thin profiles.
- 5 versions with 10÷18 mm protrusion flush of the door.

Material: Stainless steel

We did it 500,000 times!

Sicurezza

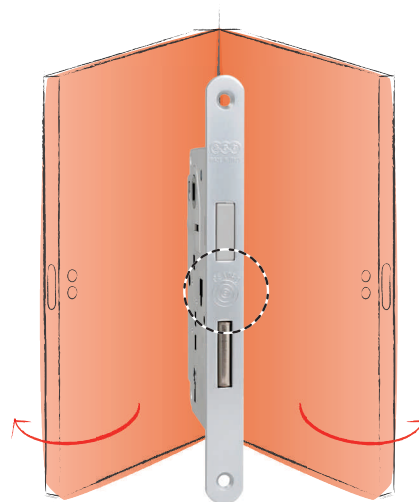
Bore an opening-closing test (UNI 9173:1988) for more than 500.000 cycles maintaining its functionality. Moreover, the excellent quality of the finishes is guaranteed by the periodical corrosion tests carried out according to the European regulations with salt fog.



Centro Focus

The Centro magnetic lock with bolt

CERTIFIED
ISO 9001

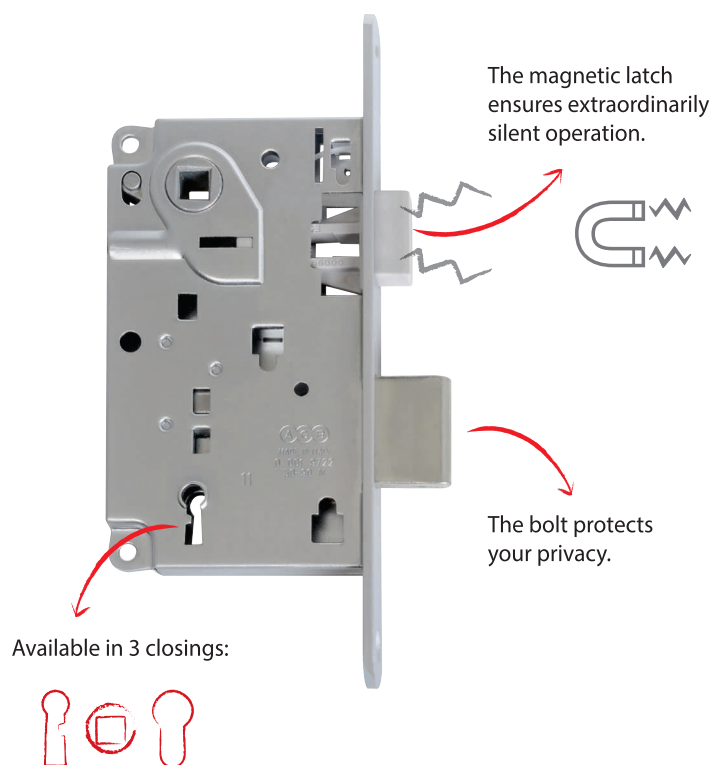


..

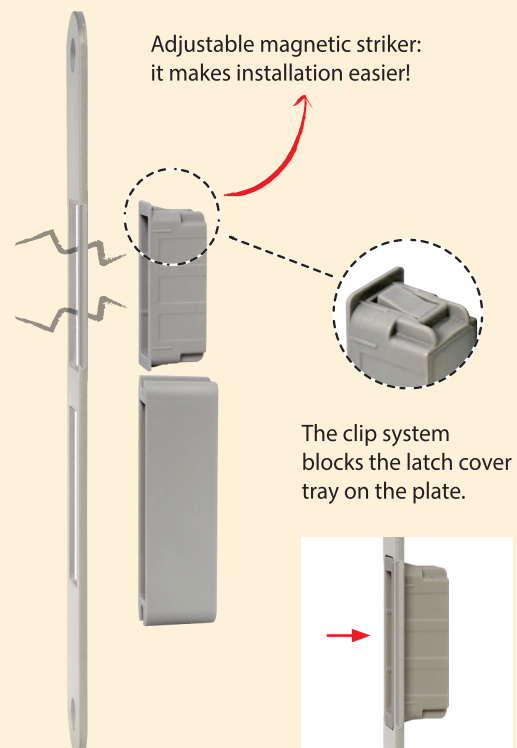
The position of the handle hub and the key, symmetrical in relation to the centre of the panel, make the lock non-handed.

Ordering Code:
Centro Focus 45mm= CF45

Centro Focus is a remarkably silent central lock with magnetic movement



Easy-fix XT striker



Scivola T

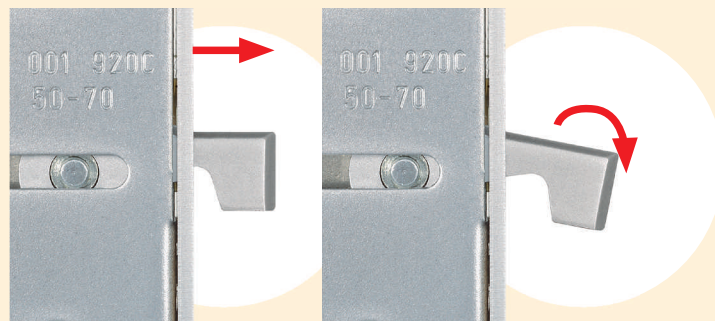
Lock for sliding doors

CERTIFIED
ISO 9001



Closes, always...

The special movement of the hook and the considerable coupling tolerance with the stiker, make the door always close, even facing vertical settlements after the installation.



... and precisely!

The hook throws from the lock forend and rotate onto the striker plate when closing.

Minimalist handles



Our range of kits with lock



Fast and accurate installation



The patented head of the hook distinguishes for being sharpened. It works as a jig, marking the centre of the milling on the jamb for the striker housing.



After the installation of the lock and the throw of the hook, by softly pushing the door against the jamb it is possible to centre the striker.



In less than 1 minute it is possible to mount the striker reaching a valuable aesthetic result.

CERTIFIED
ISO 9001

Multipoint locks

SICURTOP

- Lock with several locking points and cold pressed steel gears.
- The cylinder operates bolt and locking points.
- Smoothness and security closing movement with 2 throws.
- Compatible with terminals and extensions.
- Compatible with protective rim guard Tenax.



85/92 mm



16/20 mm



25/30/35/40/45/50/55 mm



Poseidon



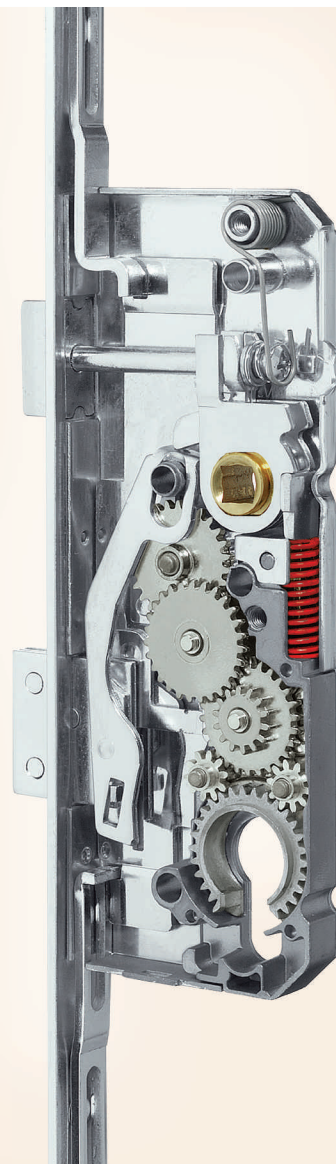
Bolt + roller cam



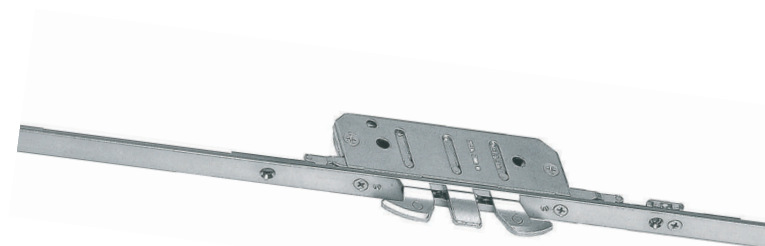
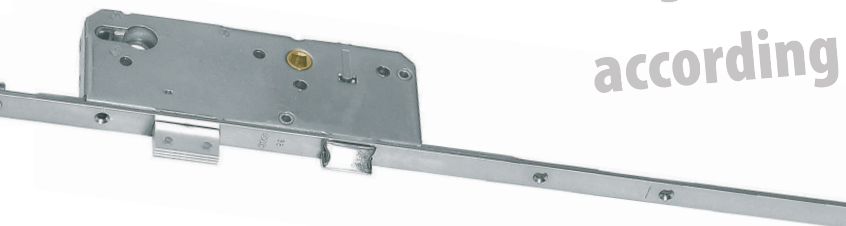
Telescopic mushroom cam



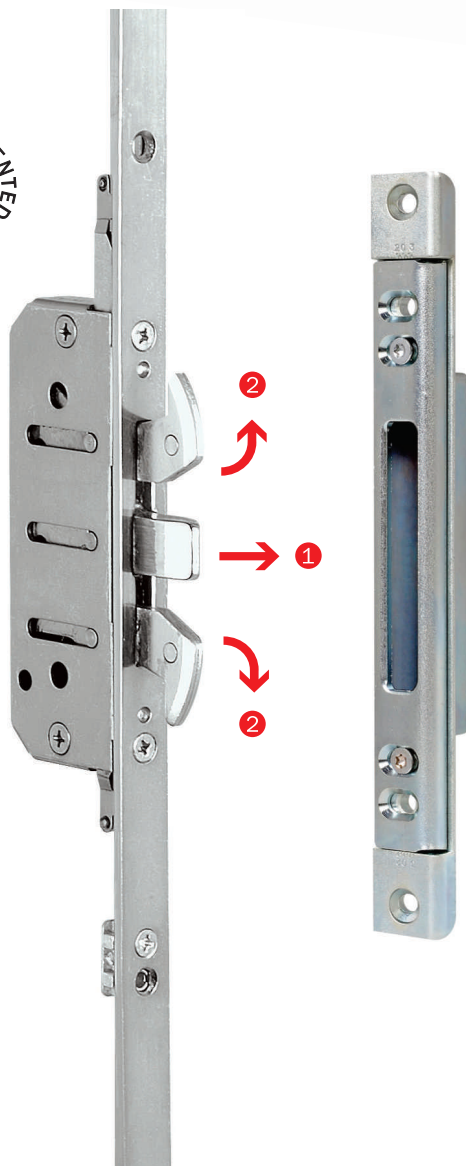
Adjustable roller cam



3rd anti-burglar class
according to ENV 1627÷30



PATENTED . PATENTED .



POSEIDON

- Patented lock for a maximum antiburglar security.
- Two opposite facing hooks¹ and central bolt² guarantee solidity and door security.



SKG certification,
equivalent to the 2nd
resistance class according
to the regulation EN 1627.

500 Series

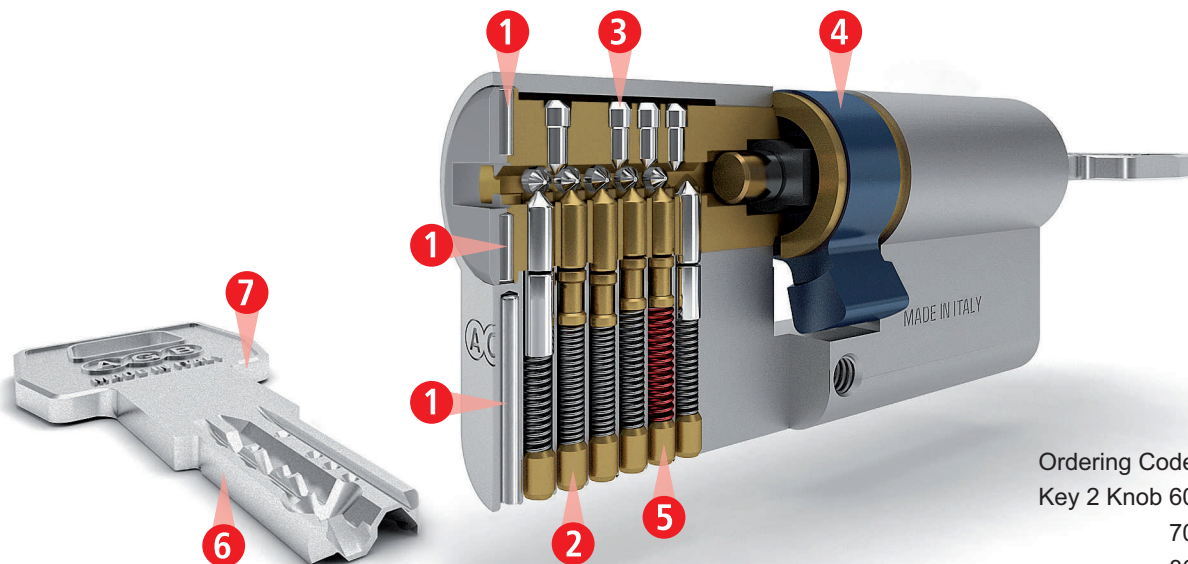
Security cylinder



Cylinder classification

ICIM - EN 1303:05									
1	6	0	1	0	C	6	0	♦	1

CERTIFIED
ISO 9001



Ordering Code:

Key 2 Knob 60mm CP / MATT

70mm CP / MATT

80mm CP / MATT

90mm CP / MATT

100mm CP / MATT

With computerised Key



3 anti-drill pins in steel on each side. **1**

6 active pins **2** and 9 passive pins. **3**

Anti-pull cam in sintered steel. **4**

High resistance to bumpingFC C C C C R R R I C **5**

5 flat reversible keys with long neck that are resistant to torsion. **6**

Possibility to personalise the grip with many different coloured covers. **7**

C C C C D T C C C C C C E I

Suitable for fire and smoke resistant doors.

Mod. 600

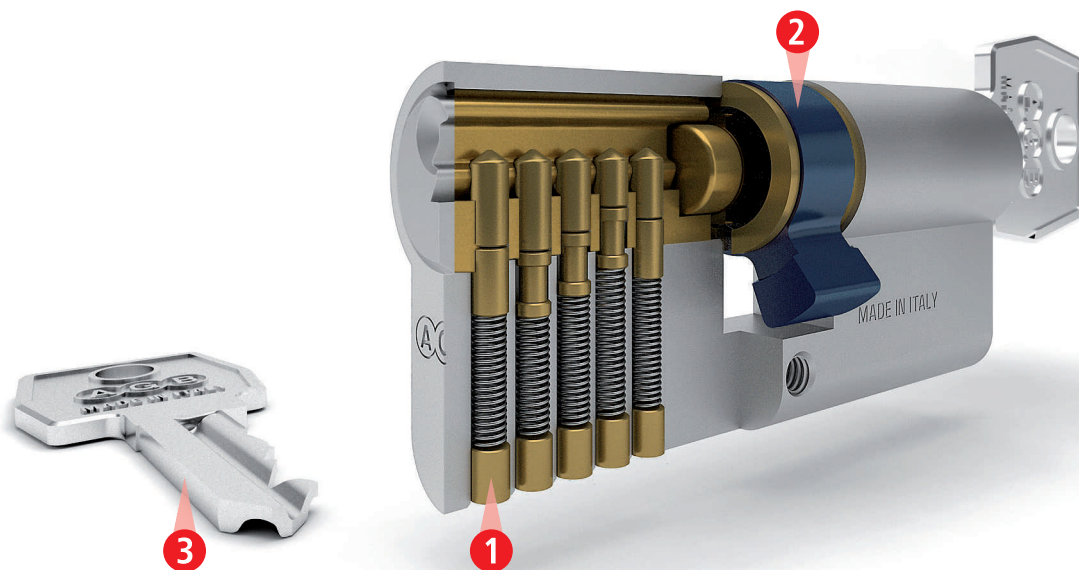
Cylinder with profiled key

Cylinder classification

ICIM - EN 1303:05									
1	6	0	1	0	C	3	0	◆	0



Strict tests have been done in the Research & Development Laboratory AGBLab to check the characteristics according with the regulation EN 1303.



4 or 5 pins in brass for the coding. ¹

Version with 6 pins for coding is available.

Anti-pull cam in sintered steel. ²

3 profiled keys. ³

Wide possibility of existing coding.

Suitable for fire and smoke resistant doors.

Dead bolt only, square ends with cylider lock, 22 mm forend



Description

Embedded lock with bolt only, to be used in combination with a DIN V 1854 profile cylinder. 22 mm forend with square ends. 35 to 70 mm backsets. Furnished with the striker, which has the same finish as the forend. Made entirely of steel or with is brass forend, bolt and striker.

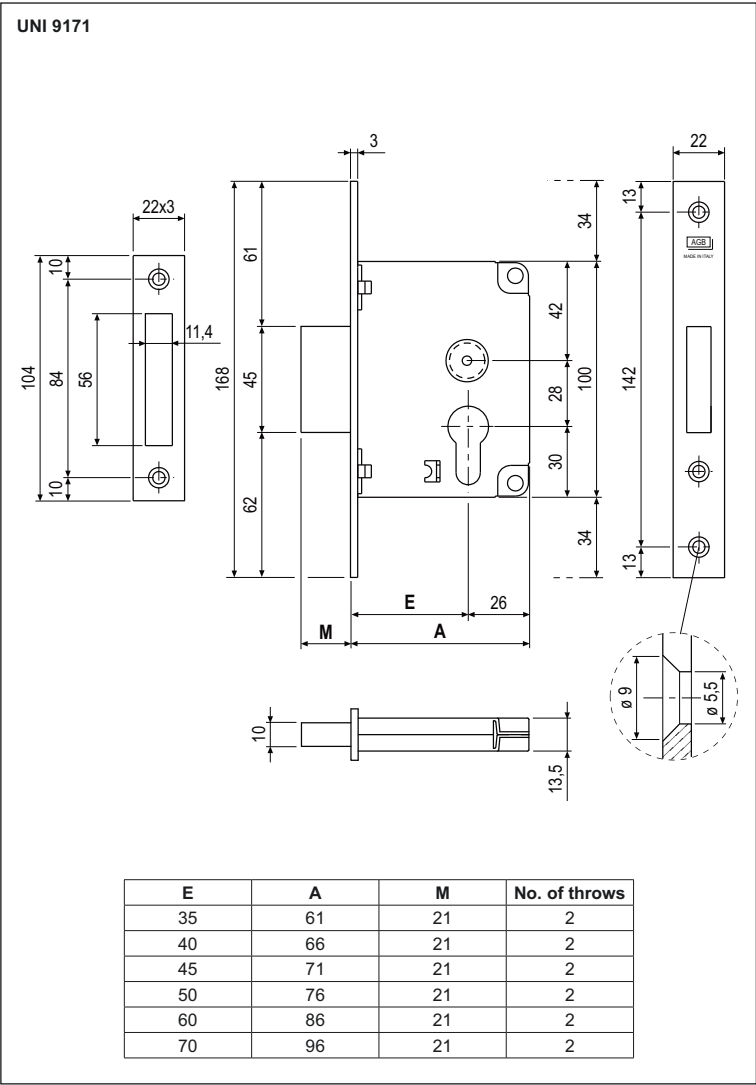
Application

Install on interior and main timber doors. For applications not requiring a spring latch, or as an extra lock where greater security and protection against forced entry are required.

Mounting

Prepare cutout and mill the panel according to the dimensions shown in the diagram. Chisel the corners. Secure lock and striker with 4 screws 4x25 mm.

NB. Cardboard box containing one lock and one screw for fastening the cylinder and one striker. The cylinder must be ordered separately.



Order Specifications

Material	SALES CODE		
	Ref.	Backset	Finish
STEEL	B00856	35-40-45-50-60-70	XX

NB. Refer to the price list in force to check the availability of the finishes.

Model 701 round/square ends with cylinder lock, 22 mm forend



Description

Embedded lock with return claw hook; striker and cylinder fastening screw are included. Used in combination with a DIN V 18254 European profile cylinder. Made entirely of steel. 22 mm forend with round or square ends. Six 30 to 60 mm backsets.

Application

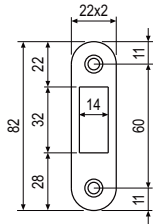
Lock for interior sliding or folding timber doors.

Mounting

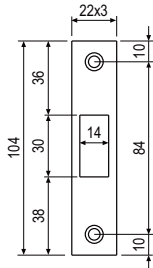
Prepare cutout and mill the panel according to the dimensions shown in the diagram. Secure the lock and striker with four 4x25 mm screws.

NB. Each box contains a lock, striker and cylinder fastening screw. The cylinder must be ordered separately. Upon request, the set can be supplied without striker (modified version 503).

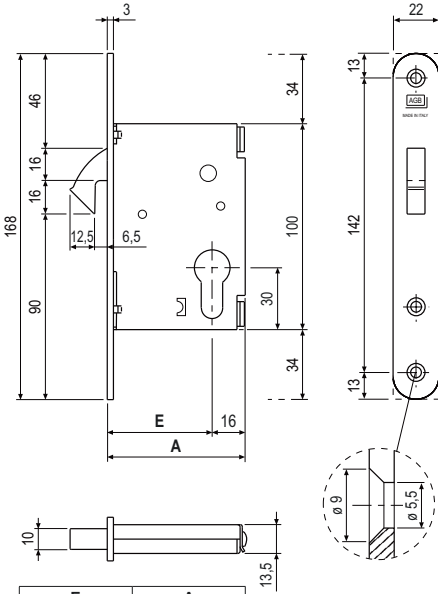
UNI 9171



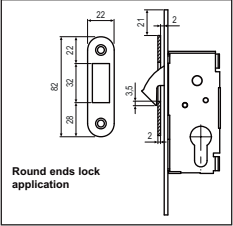
Striker for model with round ends



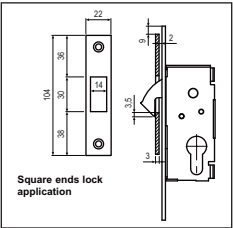
Striker for model with square ends



E	A
30	46
35	51
40	56
45	61
50	66
60	76



Round ends lock application



Square ends lock application

Order Specifications

Material	SALES CODE		
	Ref.	Backset	Finish code
STEEL	B00702	30-35-40-45-50-60	XX

Order Specifications

Material	SALES CODE		
	Ref.	Backset	Finish code
STEEL	B00705	30-35-40-45-50-60	XX

NB. Refer to the price list in force to check the availability of the finishes.

Model 701 round/square ends with key lock, 22 mm forend



Description

Embedded lock with return claw hook, striker included. Made entirely of steel or with brass forend and striker. 22 mm forend with round or square ends.

Six 30 to 60 mm backsets. Patent type key with single differ.

Application

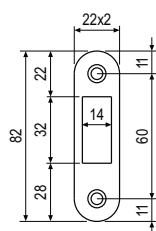
Lock for interior sliding or folding timber doors.
Can be combined with Scivola kits "G" and "H".

Mounting

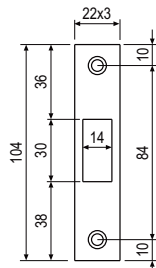
Prepare cutout and mill the panel according to the dimensions shown in the diagram. Secure the lock and striker with four 4x25 mm screws.

NB. Each box contains a lock, striker and key. Upon request, the set can be supplied without striker (modified version 503).

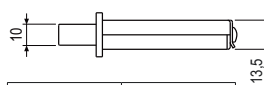
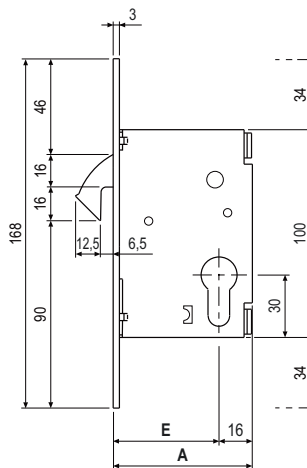
UNI 9171



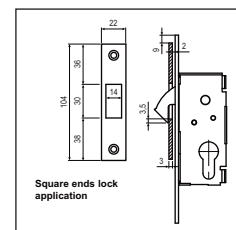
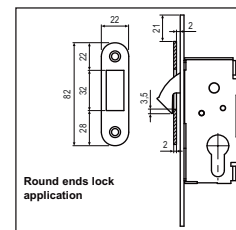
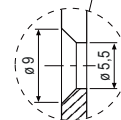
Striker for model with round ends



Striker for model with square ends



E	A
30	46
35	51
40	56
45	61
50	66
60	76



Order Specifications

Material	SALES CODE		
	Ref.	Backset	Finish code
STEEL	B00701	30-35-40-45-50-60	XX



1



Order Specifications

Material	SALES CODE		
	Ref.	Backset	Finish code
STEEL	B00704	30-35-40-45-50-60	XX



1

NB. Refer to the price list in force to check the availability of the finishes.

Imported & Marketed By:



JYOTI ARCHITECTURAL PRODUCTS PVT LTD

A 111, Sagar Tech Plaza,
Andheri Kurla Road,
Sakinaka Junction,
Mumbai 400072. India
Tel. 022 4242 1000.
Email: info@jyotiarch.in